

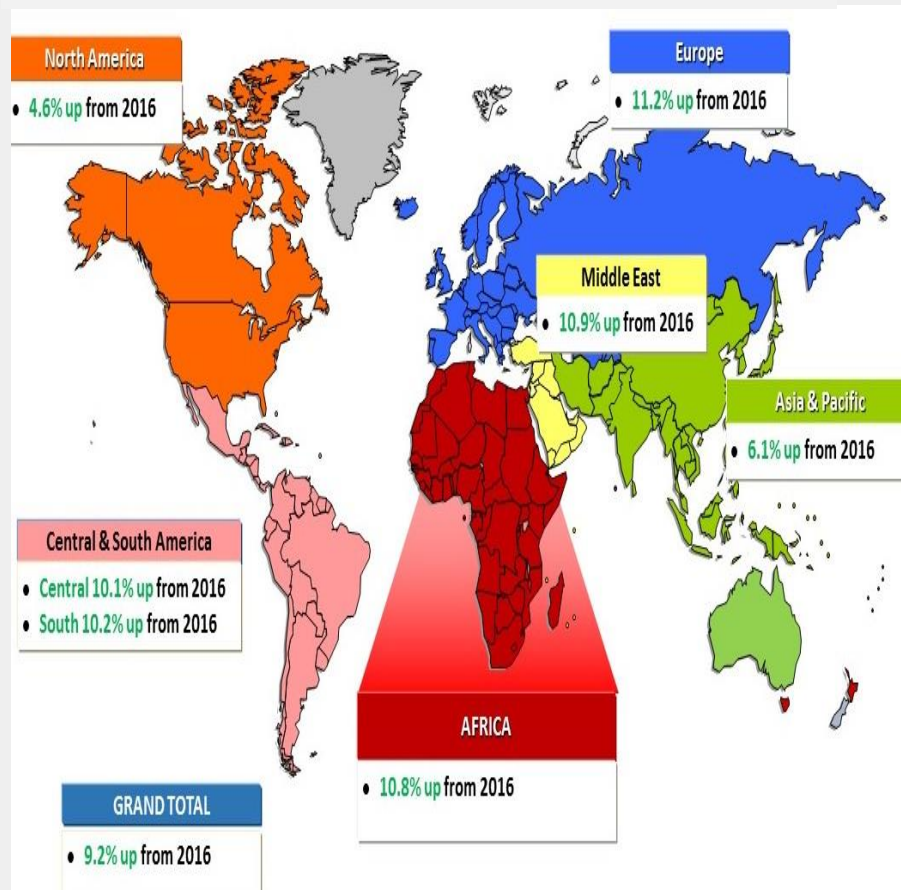


**TOURISM QUARTERLY FACTSHEET: QUARTER TWO**  
 2017 Volume 2: 20 November 2017

**GLOBAL TOURISM PERFORMANCE**

**Global tourist arrivals performance (Apr-June 2017)**

*Global tourist arrivals increased by 9.2% for the period April-June 2017 compared to April-June 2016.*

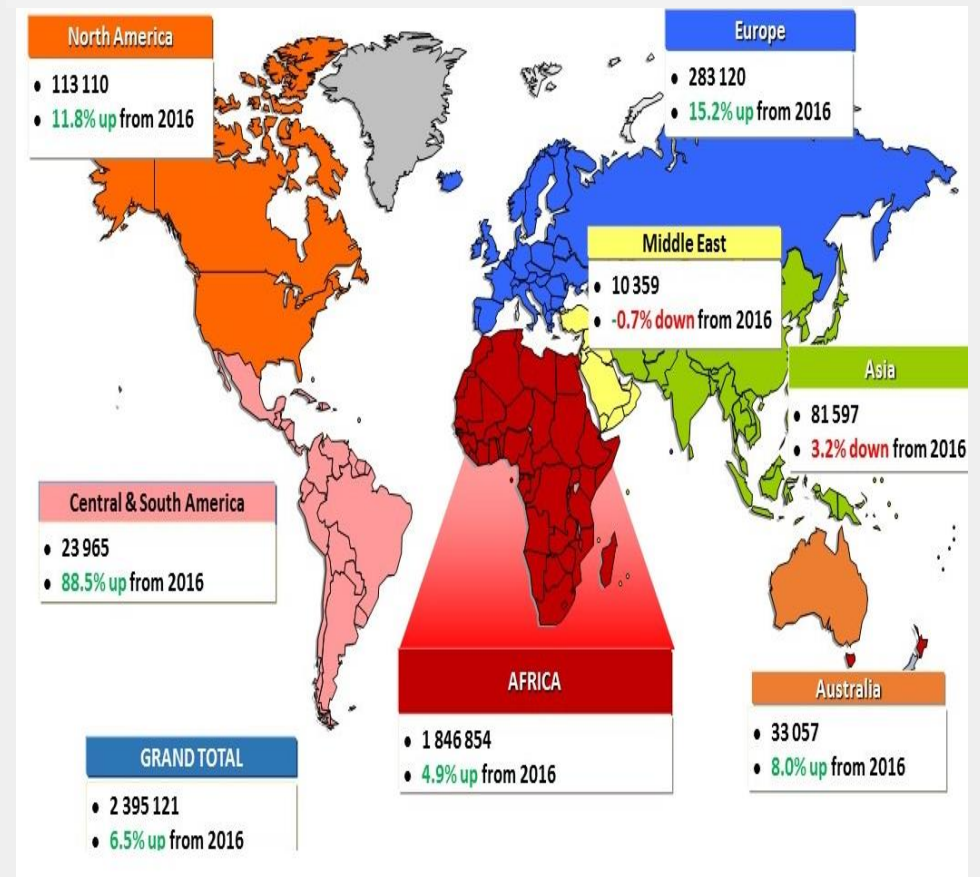


Source: UNWTO Barometer: October 2017

**SOUTH AFRICA INBOUND TOURISM PERFORMANCE**

**South Africa tourist arrivals performance (Apr-June 2017)**

*South African tourist arrivals increased by 6.5% for the period April-June 2017 compared to April-June 2016.*

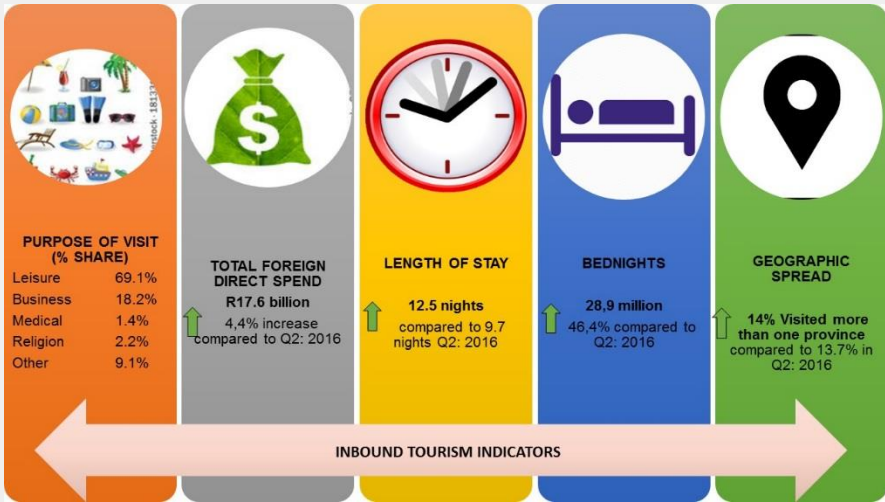


Source: Stats SA: Tourism and Migration report: April-June 2017

**TOURISM QUARTERLY FACTSHEET: QUARTER TWO**  
2017 Volume 2: 20 November 2017

**South Africa Inbound Key Indicators Performance (Apr-June 2017)**

Comparing Apr-June 2017 to Apr-June 2016, there was an increase recorded in the key inbound tourism indicators as shown below.

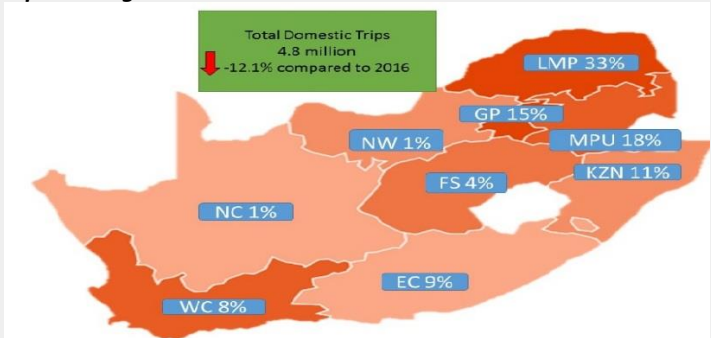


Source: SAT: Quarterly report: 2017

**SOUTH AFRICA DOMESTIC TOURISM INDICATORS**

**Provincial share of domestic trips (April-June 2017)**

Most of the domestic trips for quarter two were in Limpopo, Gauteng and Mpumalanga.



Some of the results presented are below significant levels.

Source: SAT: Quarterly report: 2017

**South Africa Domestic Tourism Indicators (Apr-June 2017)**

Comparing Apr-June 2017 to Apr-June 2016, there was a decline recorded in total domestic direct spend and bed nights as shown below.



Source: SAT Quarterly reports, 2017.

**OTHER SOUTH AFRICA ECONOMIC TOURISM INDICATORS**

**Performance of the Air travel, accommodation and the food and beverages industries in South Africa (April-June 2017)**

Passenger movements, accommodation and the food and beverages industry had a positive growth for the period Apr-June 2017 compared to Apr-June 2016.



Source: Airports Company South Africa September data 2017, Stats SA, Accommodation and Food and Beverages data:2017.

**TOURISM QUARTERLY FACTSHEET: QUARTER TWO**  
2017 Volume 2: 20 November 2017

**Tourism Employment (April-June 2017)**

*For the second quarter (Apr-June 2017), it is estimated that the tourism sector contributed about 731 398 jobs, which was about 4.5% of total employment in South Africa. This was a 6.3% increase compared to Quarter 2 of 2016.*



	Q2: 2016	Q2: 2017	Diff	% Growth
Total Direct Tourism Employment	687 925	731 398	43 473	6.3%

Source: Stats SA: Quarterly Labour Survey Force Survey Q2 (Apr-June 2017).  
\*The industry ratios applied in the 2015: Tourism Satellite Account was used to calculate Tourism employment

**OTHER KEY SOUTH AFRICAN ECONOMIC INDICATORS**



Source: Stats SA: QLFS Q2:2017, Economic Report Q2, 2017 and Fuel Pricing Automobile Association, 2017.

**KEY EVENTS HELD GLOBALLY AND NATIONALLY:  
APRIL-JUNE 2017**

**GLOBAL EVENTS HELD DURING THE PERIOD APR-JUNE 2017**

	
Events Held	Upcoming Events: Jan-March 2018
<ul style="list-style-type: none"> <li>UNWTO Regional Course on "Strategies of Sustainable Tourism for Local Development" - Guadalajara, Mexico, Date: 4-8 September 2017 -</li> <li>22nd Session of the UNWTO General Assembly - Chengdu, China, Date: 11-16 September 2017 -</li> <li>1st Tourism EXPO Japan (TEJ) Ministerial Round Table 2017 (in collaboration with UNWTO) - Tokyo, Japan, Date: 21-22 September 2017 -</li> <li>2nd UNWTO Global Conference on Wine Tourism - Mendoza, Argentina, Date: 29-30 September 2017</li> <li>2nd UNWTO Global Conference on Talent Development in Tourism: Strategies for Competitive Destinations - Marbella, Spain, Date* 8-10 October 2017</li> </ul>	<ul style="list-style-type: none"> <li>INVESTOUR 2018: IX Tourism Investment and Business Forum for Africa - IFEMA, Spain, Date: 17-21 January 2018</li> <li>International Conference on Tourism and Snow Culture - Yamagata, Japan, Date: 1-3 February 2017</li> <li>18th session of the UNWTO Committee on Statistics and Tourism Satellite Account - Madrid, Spain, Date: 27-28 February 2018</li> <li>Regional Statistics Capacity Building Programme - Second Workshop - Algiers, Algeria, 19-21 March 2018</li> </ul>

Source: Event search on Google and UNWTO events Calendrer, 2017-2018

**NATIONAL EVENTS HELD IN SOUTH AFRICA DURING THE PERIOD APR-JUNE 2017**

	
Events Held:	Upcoming Events: Jan-March 2018
<ul style="list-style-type: none"> <li>Minister Xasa consulted the industry over Draft NTSS, The Radisson Blue Hotel, Sandton, Gauteng, Date: 07 August 2017</li> <li>Tourism Public Lecture was hosted by the Minister of Tourism, in Mpumalanga. Date: 26 September 2017</li> <li>National Tourism Careers Expo (NTCE) held in Bloemfontein. Date: 28-30 September 2017</li> <li>Minister Xasa launched the Solar Photovoltaic Power Plant on Robben Island, Cape Town: 19 October 2017</li> </ul>	<ul style="list-style-type: none"> <li>International Tourist Guide Celebrations, Limpopo: Date: 15-16 February 2018</li> <li>Sharing of Best Practices Workshop: Date: 19-23 February 2018</li> <li>Tourism Research Seminar, Gauteng: Date March 2018</li> <li>Tourism Indaba, Durban, Date: 8-10 May 2018</li> </ul>

Source: National Department of Tourism Calendar: 2017-2018.





tourism

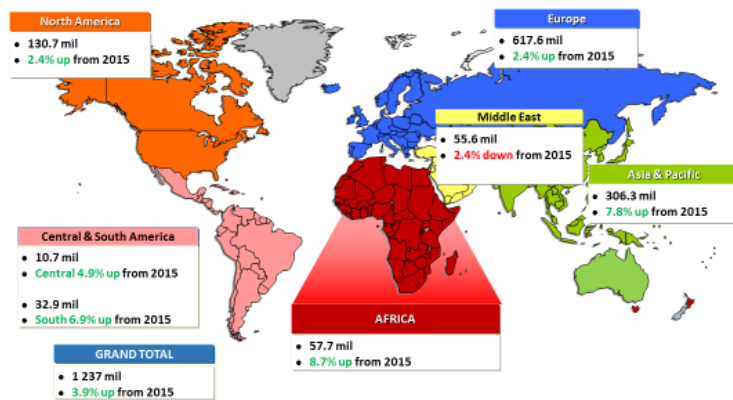
Department:  
Tourism  
REPUBLIC OF SOUTH AFRICA

## TOURISM QUARTERLY FACTSHEET: QUARTER TWO 2017 Volume 2: 20 November 2017

### TOURISM ANNUAL PERFORMANCE

#### Global tourist arrivals performance: 2016

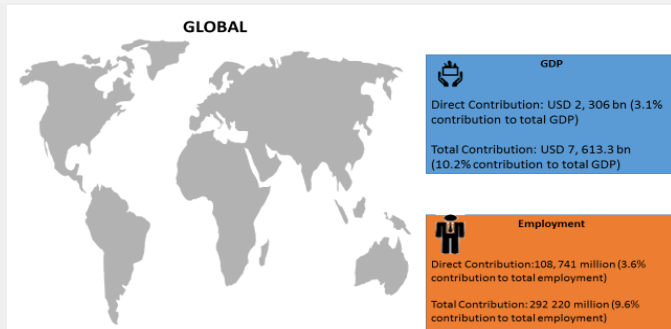
Global tourist arrivals for 2016 was 1, 237 million which was a 3.9% increase compared to 2015 (1, 190 million).



Source: SAT: UNWTO Barometer October 2017

#### GLOBAL TOURISM ECONOMIC PERFORMANCE: 2016

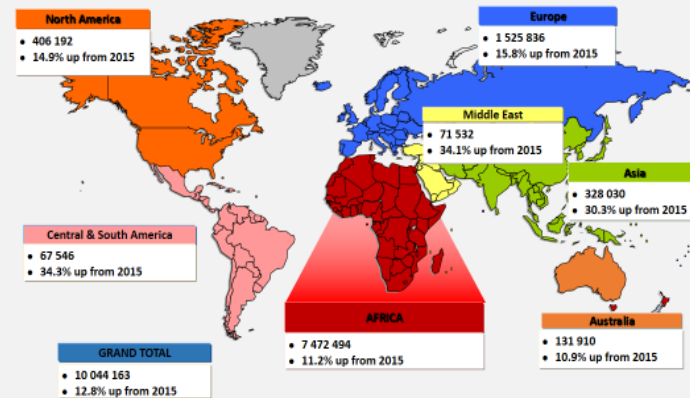
In 2016, tourism's direct contribution to GDP was USD 2, 306 billion, 3.1% contribution to the total GDP.



Source: WTTC, Travel and Tourism Economic Impact 2017 World Report

#### South Africa tourist arrivals performance: 2016

South African tourist arrivals increased by 12.8% in 2016 reaching a total of 10,044, 163 million.



Source: SAT: Annual Report, 2017.

#### South Africa Inbound Tourism Key Indicators Performance: 2016

Comparing 2016 to 2015, there was an increase recorded in most of the key inbound indicators except for length of stay.



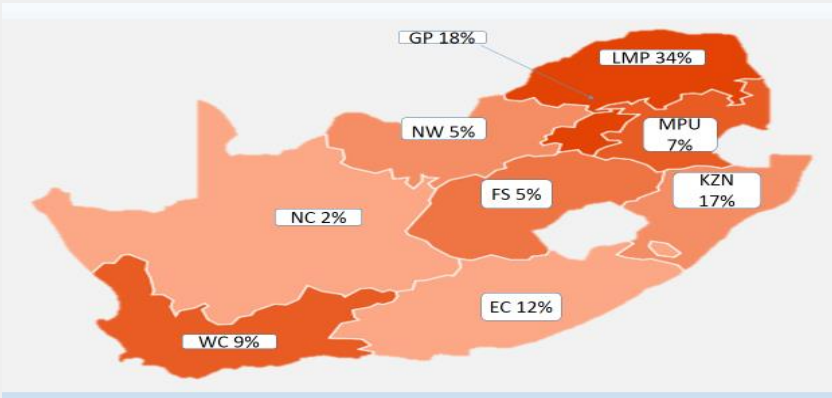
Source: SAT: Annual Report, 2017.

**TOURISM QUARTERLY FACTSHEET: QUARTER TWO**  
2017 Volume 2: 20 November 2017

**SOUTH AFRICA DOMESTIC TOURISM INDICATORS**

**Provincial share of domestic trips: 2016**

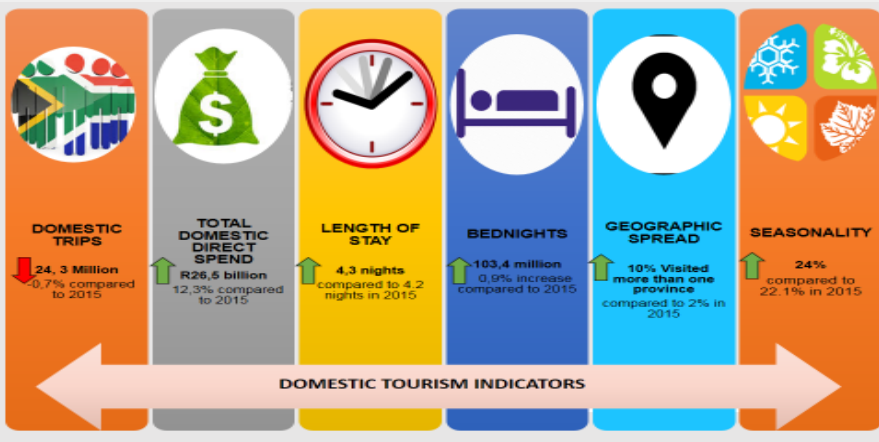
Most of the domestic trips for quarter two were in Limpopo, Gauteng and KZN.



Source: SAT: Annual Report: 2017

**South Africa Domestic Tourism Indicators: 2016**

Comparing 2016 to 2015, there was an increase recorded in the key domestic indicators as shown below. .

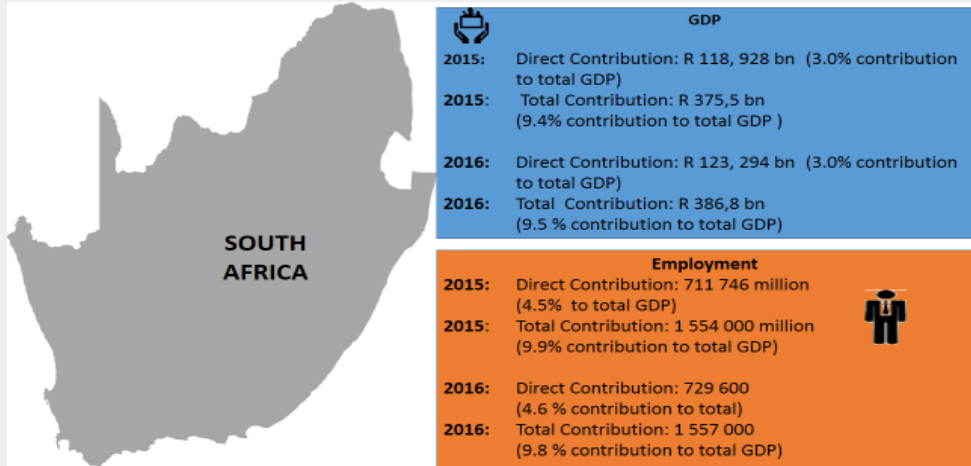


Source: SAT Annual Report, 2017.

**SOUTH AFRICA ECONOMIC TOURISM PERFORMANCE: 2016**

**South Africa Tourism GDP and Employment Contribution: 2016**

In 2016, tourism's direct contribution to GDP was R118, 928 billion, which contributed 3.0% of the total GDP.



Source: Tourism Satellite Account: 2015; Stats SA 2016. 2016: WTTC estimates

**REFERENCES**

- [http://cf.cdn.unwto.org/sites/all/files/pdf/unwto\\_barom17\\_05\\_october\\_excerpt.pdf](http://cf.cdn.unwto.org/sites/all/files/pdf/unwto_barom17_05_october_excerpt.pdf)
- <https://live.southafrica.net/media/48836/tourists-table-b-june-2017.pdf>
- <http://www.statssa.gov.za/publications/P6410/P6410June2017.pdf>
- <http://www.statssa.gov.za/publications/P6420/P6420June2017.pdf>
- [http://www.southafrica.net/uploads/files/2016\\_Annual\\_Report\\_v5\\_20072017.pdf](http://www.southafrica.net/uploads/files/2016_Annual_Report_v5_20072017.pdf)
- <http://www.statssa.gov.za/publications/P0141/P0141June2017.pdf>
- <https://www.wttc.org/-/media/files/reports/economic%20impact%20research/regions%202016/world2016.pdf>
- <http://www.statssa.gov.za/publications/Report-04-05-07/Report-04-05-072013.pdf>
- <https://www.wttc.org/datagate>
- <https://aa.ensighthq.com/on-the-road/calculator-tools/fuel-pricing/>